



RESTOREX[®]

Next Generation Penile Traction
Therapy Device

**To correct or prevent lost penile length
resulting from urological surgeries and
treatments or chronic disease**

Developed in Cooperation with Mayo Clinic

Quick Start
Video
at
restorex.com

 PathRight
MEDICAL

Your path to restored health

I N S T R U C T I O N S F O R U S E

Indication for Use

RestoreX® is intended for use to correct the deformity (lost length) resulting from urological surgeries and treatments or chronic disease.

Read these instructions in their entirety before using the RestoreX device.
Use only as directed.

If you have questions about the use of the RestoreX device,
please call or email customer service at:

1-877-228-5147

support@restorex.com

9 a.m. to 5 p.m. (CST), Mon-Fri

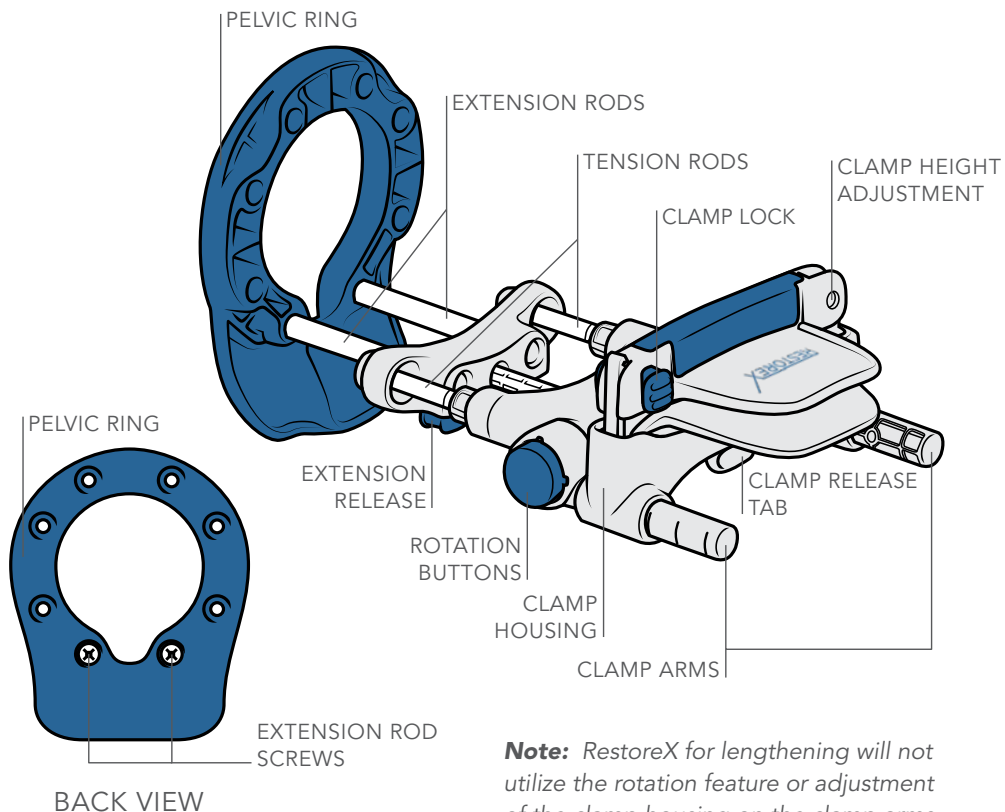
RestoreX is a registered trademark of PathRight Medical, Inc.

Contents

Overview.....	4
Setting up the RestoreX Device	
Part 1 - Selecting Extension Rod Length.....	6
Part 2 - Adjusting Clamp Height.....	9
Using the RestoreX Device	
Step 1 - Secure the Penis in the Clamp.....	12
Step 2 - Extend and Add Tension.....	14
Removing RestoreX.....	17
Recommended Treatment Times.....	18
Warnings and Precautions.....	19
Contraindications.....	20
Troubleshooting.....	21
Care.....	23

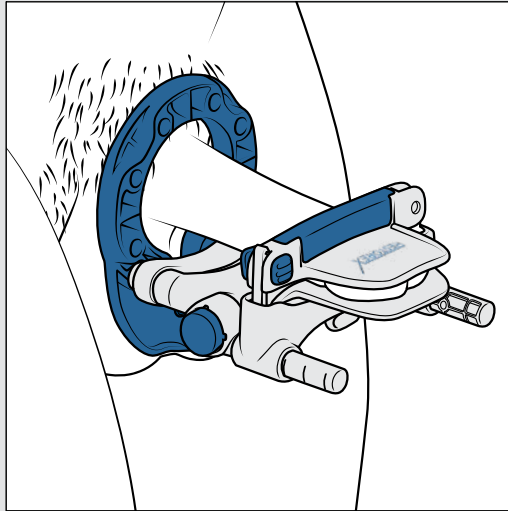
Overview

Please review the image to become familiar with the primary components of RestoreX.



Note: RestoreX for lengthening will not utilize the rotation feature or adjustment of the clamp housing on the clamp arms.

Setting up the RestoreX Device



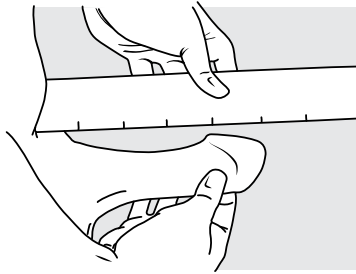
RestoreX accommodates stretched penile lengths greater than 3.75 inches. Follow these one-time setup instructions to customize RestoreX for your length and girth.

To customize, you will need the following:

- Your RestoreX device
- A ruler (*not supplied*)
- A Phillips-head screwdriver (*not supplied*)

Part 1 – Selecting Extension Rod Length

To begin setting up RestoreX, complete the following measurement:



Stretched Penile Length

- Hold the tip of the flaccid penis and pull it outward from the body until maximally stretched.
- With a ruler, measure from the tip of the penis to the base of the penis in the flaccid state.

Important: If you have a fat pad at the base of the penis (very common), push the ruler into this pad to properly measure the full penile length.

Compare your recorded stretched penile length to the following table:

Recorded Stretched Length		Recommended Extension Rod Length
Inches	Centimeters	
3.75 to 6.25	10 to 16	Standard rod length - Your device is currently set-up with the correct rod length. Please proceed to Part 2 (pg. 9).
Longer than 6.25	Longer than 16	Extended rod length* - Please see the instructions to exchange the rods. <i>*The extended rods are located in the RestoreX box</i>

Note: RestoreX cannot accommodate a stretched penile length less than 3.75 inches (10 centimeters). If less than 3.75 inches, please remeasure as detailed above being sure to push the ruler into any fat pad which may exist near the base of the penis to get an accurate measurement.

Note: RestoreX may not provide sufficient traction for men with a stretched penile length greater than 9 inches (23 centimeters).

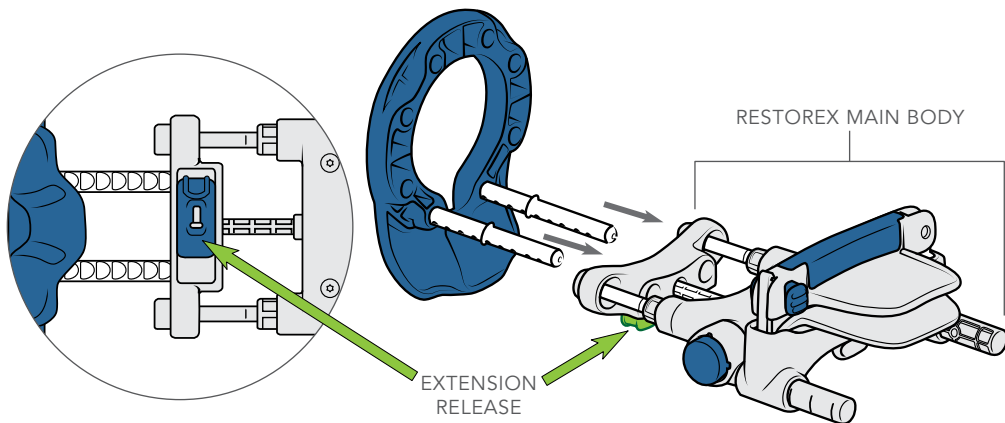
Part 1 – Selecting Extension Rod Length (Cont.)

Changing Extension Rods (if necessary) and Adjusting Rod Location

If your stretched penile length is less than 6.25 inches and you are using the standard extension rod length, proceed to **Part 2** (pg. 9). Otherwise, you will need to change the rod length.

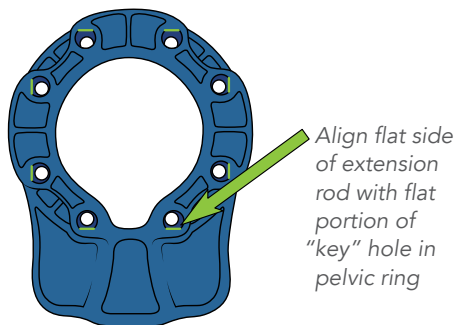
Removing the rods:

- First, slide the extension release and hold to disengage the extension rods.
- Second, slide the main body of the device off the rods and away from the pelvic ring until it is fully removed.
- Next, unscrew the extension rods and detach from the pelvic ring using a Phillips-head screw driver (*not supplied*). See page 4 for location of screws.
- Gently pull each extension rod until they come free from the pelvic ring.



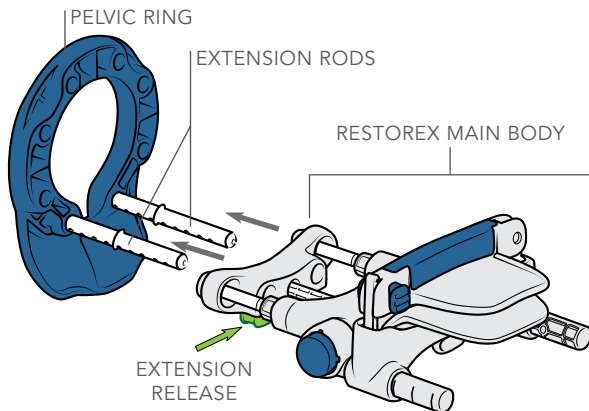
Re-attaching the extension rods:

- Place the extension rod into the pelvic ring by aligning the flat side of the extension rod with the flat portion of the “key” hole in the pelvic ring, as depicted.
- Attach the screw to the extension rod through the hole in the pelvic ring and tighten. Do not overtighten. Overtightening may damage your RestoreX device.
- Attach the second rod using the same process.



With the extension rods in place, re-connect the main body of the RestoreX device:

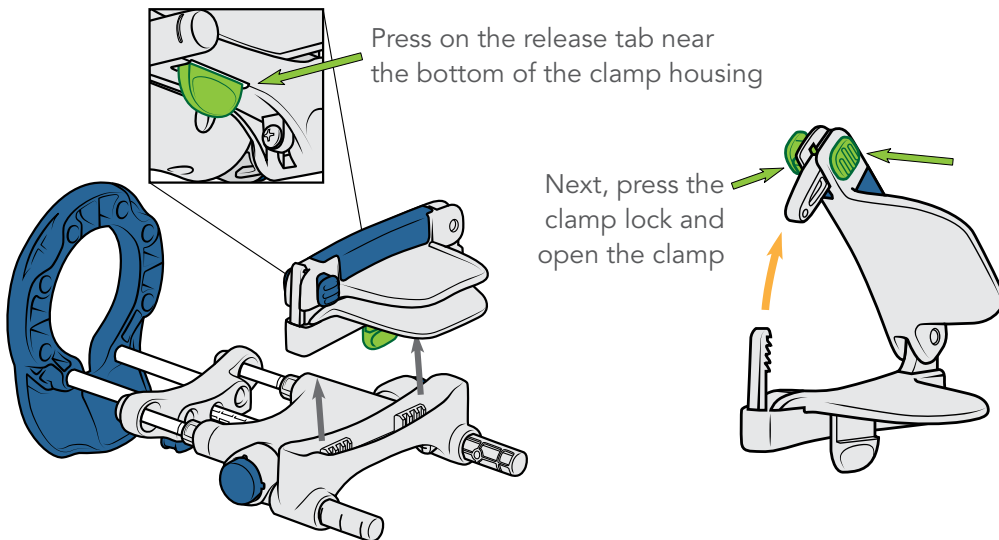
- Slide and hold the extension release while sliding the body onto the rods, as shown.



Part 2 – Adjusting Clamp Height

In some cases, the clamp height may need to be adjusted to improve comfort during the treatment. To determine if an adjustment is necessary, remove the clamp from the clamp housing.

Remove the clamp from the clamp housing:



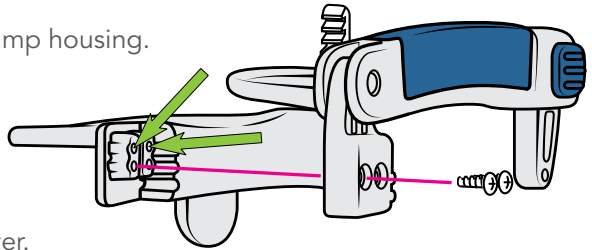
Return the clamp lock to the locked position and place the head of the flaccid penis into the clamp. Gently begin closing the clamp. Continue to close to tighten—listening to the number of “clicks” required—until reaching a setting where you could comfortably wear the clamp without discomfort for at least 30 minutes.

Part 2 – Adjusting Clamp Height (Cont.)

If you are unable to close the clamp or only able to lock it in the highest position (one click), you will need to adjust the clamp height. Otherwise, proceed to the next page.

Adjusting the clamp height:

- Remove the clamp from the clamp housing.
- Identify the two screws on the inside, bottom portion of the clamp, as shown at right.
- Loosen and remove the screws using a Phillips-head screw driver.
- Once the screws are removed, gently separate the two pieces by pulling apart.
- Reposition the clamp at the higher location, as shown above.
- Replace the screws and gently tighten. Completely tighten but do not overtighten the screws. Overtightening may damage your RestoreX device.
- Replace the clamp into the clamp housing.



Your RestoreX device is now customized for your use!